

Monserate Mountain Preserve

Legend



Trailhead



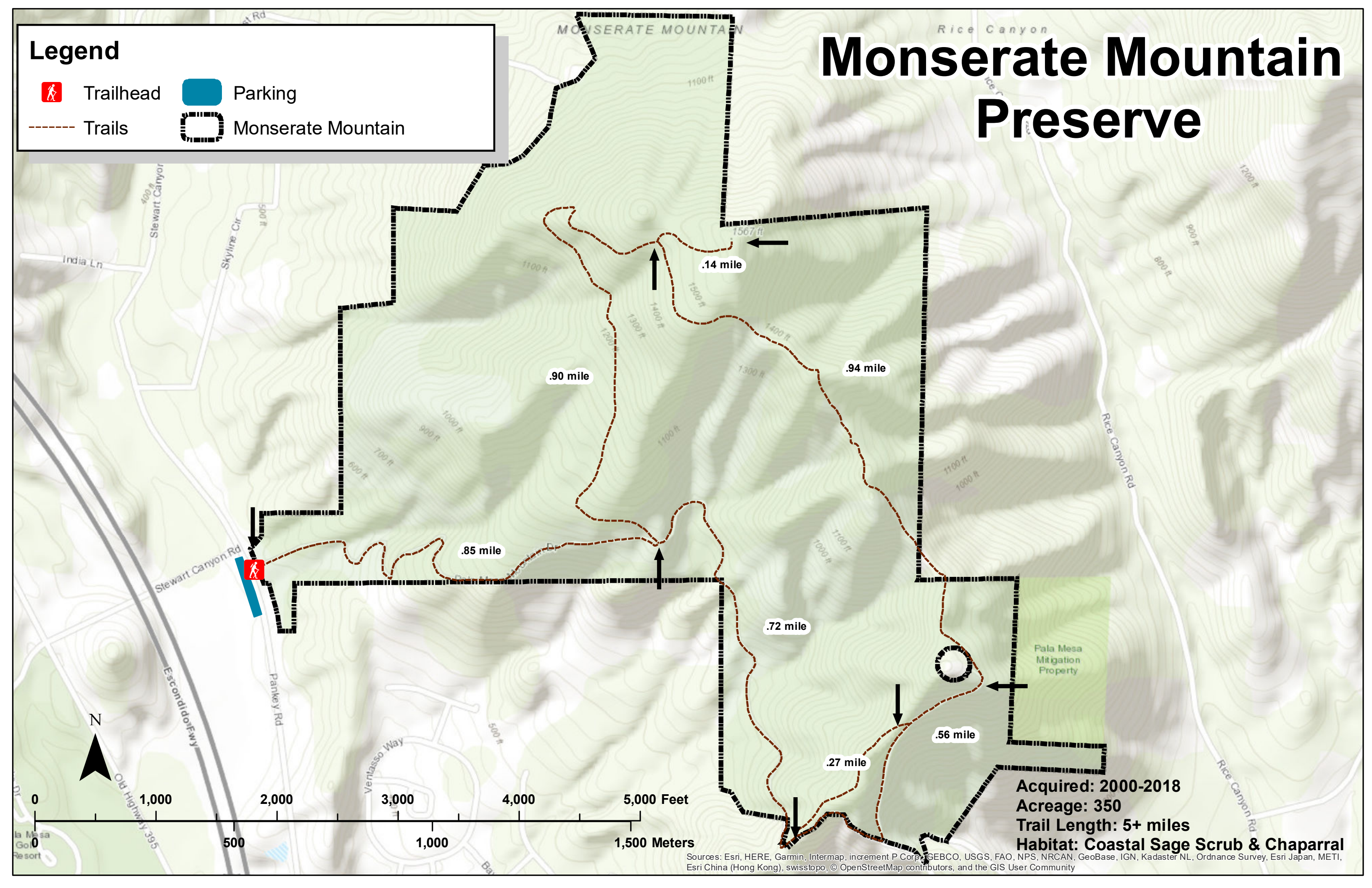
Parking



Trails



Monserate Mountain



Acquired: 2000-2018
Acreage: 350
Trail Length: 5+ miles
Habitat: Coastal Sage Scrub & Chaparral

Sources: Esri, HERE, Garmin, Intermap, increment P Corp., GEBCO, USGS, FAO, NPS, NRCAN, GeoBase, IGN, Kadaster NL, Ordnance Survey, Esri Japan, METI, Esri China (Hong Kong), swisstopo, © OpenStreetMap contributors, and the GIS User Community